

**TOWNSHIP OF FAIRFIELD
LYCOMING COUNTY, PENNSYLVANIA**

ORDINANCE NO. 2016-00 ~~_____~~ *No. 050216*

**AN ORDINANCE AMENDING AND REVISING
THE ZONING MAP OF FAIRFIELD TOWNSHIP**

BE IT ORDAINED AND RESOLVED, following proper public notice and public hearing, it is hereby ordained and resolved by the Board of Supervisors of the Township of Fairfield, County of Lycoming, Commonwealth of Pennsylvania, as follows:

SHORT TITLE

This Ordinance shall be known as the 2016 Amendment to Zoning Map of Fairfield Township and shall be incorporated into the Fairfield Township Ordinance of 2007, as revised, with the following corresponding Zoning Map revisions.

LEGISLATIVE INTENT

The parcels listed below are either presently utilized for commercial uses or front State Route 87 Highway in close proximity to the highway interchange between State Route 87 and U.S. Route 180 Highway. The Board of Supervisors believe Mill Creek provides a natural transition between this highway interchange and the more residential and agricultural uses that follow State Route 87 as it crosses Mill Creek to the northern boundary of the Township. The Zoning Map revision is intended to recognize the more commercial nature of this highway interchange while preserving the residential agricultural nature of the Township north of Mill Creek.

MAP AMENDMENTS

The amendments to the Zoning Map are as follows: Consistent with existing uses of the following listed tax parcels and the proximity of these tax parcels to existing commercial uses

and the highway interchange between State Route 87 Highway and U.S. Route 180 Highway, the zoning map revision authorized by this Ordinance reclassifies the following tax parcels from R-A Residential Agricultural to C-General Commercial: 12-351-100; 12-351-100.A; 12-351-101; 12-351-101.B; 12-351-101.C; 12-351-101.D; 12-351-101.E; and, 12-351-101.F.

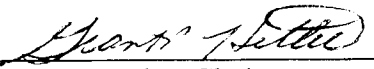
EFFECTIVE DATE

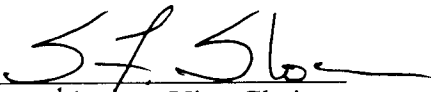
This Ordinance shall become effective five (5) days after enactment or as otherwise established by operation of law.

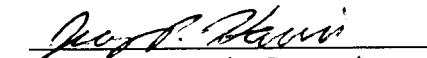
REPEALER


All ordinances or parts of ordinances inconsistent with this Ordinance are hereby repealed insofar as they may be inconsistent herewith.

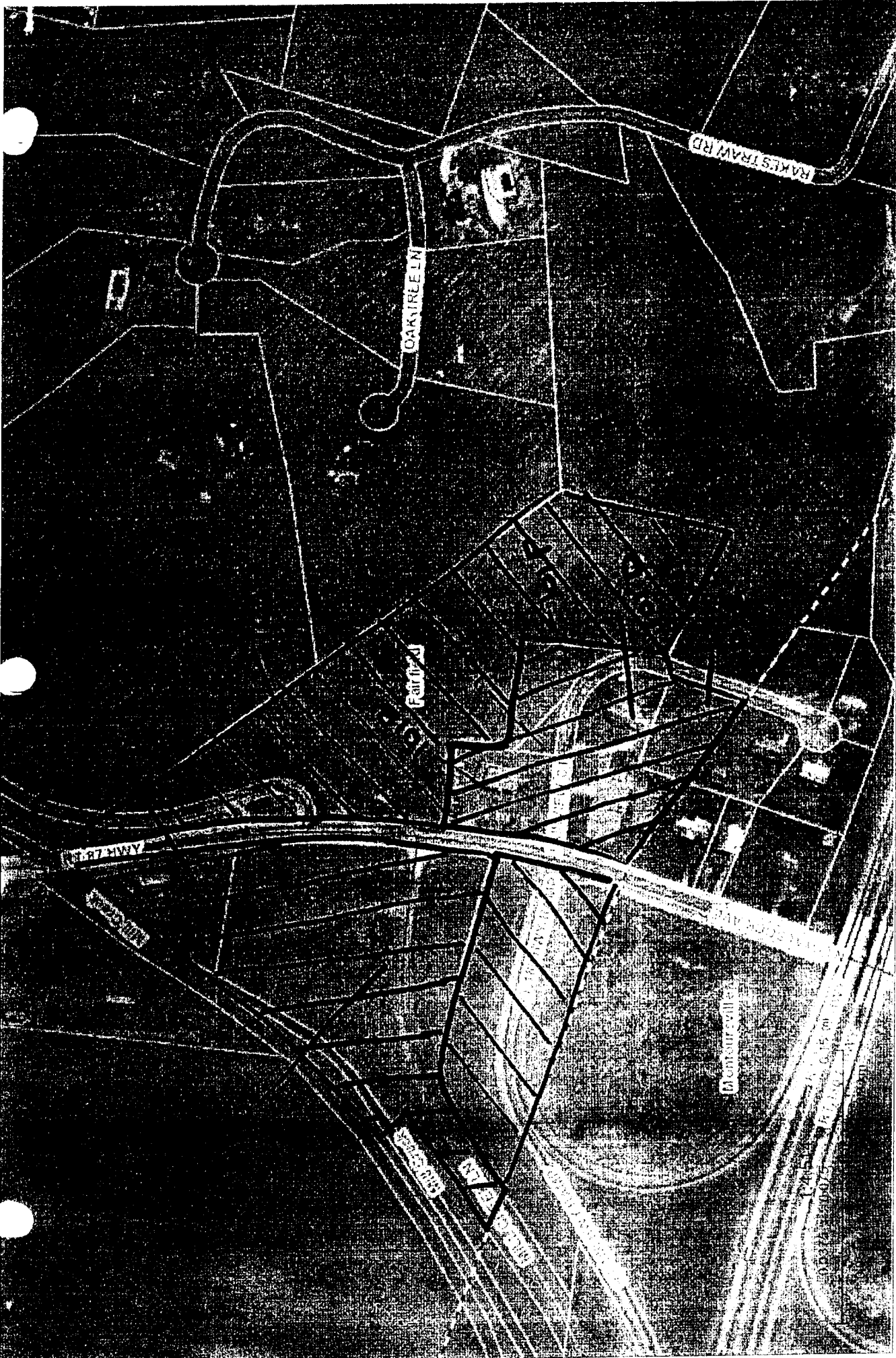
ENACTED AND ORDAINED this 2nd day of MAY, 2016:


Grant P. Hetler, Chairman

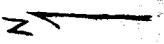

Scott F. Slocum, Vice-Chairman


Jeremy P. Harris, Supervisor


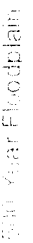



Ronald Springman, Secretary



Map Printed on April 4, 201



include
? include

-  Parcels
-  Floodplains
-  Roads
-  Streams